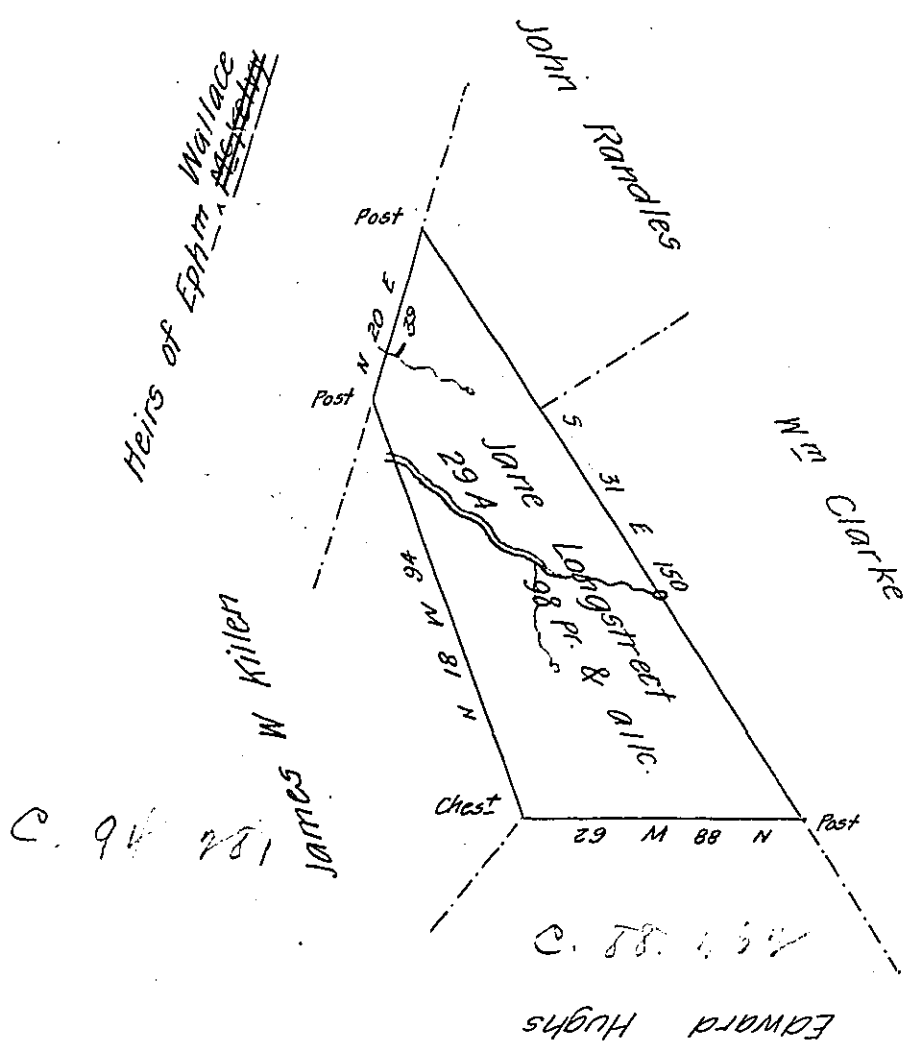


FORM NO 1.



March 14<sup>th</sup> A.D. 1839 Surveyed to Jane Longstreet the above described tract of twenty nine acres and ninety eight perches & the usual allowance of six pr. Cent. Including an improvement adjoining lands of James W. Killen heirs of Ephraim Wallace and others Situate in Wheatfield township Indiana County By Warrant of the 26<sup>th</sup> October 1838

Wm. Evans D.S.

To John Taylor Esqr

S.G.

IN TESTIMONY that the above is a copy of the original remaining on file in the Department of Internal Affairs of Pennsylvania, made conformably to an Act of Assembly approved the 16th day of February, 1833, I have hereunto set my Hand and caused the Seal of said Department to be affixed at Harrisburg, this twenty ninth day of January 1908

Henry Howell  
Secretary of Internal Affairs.